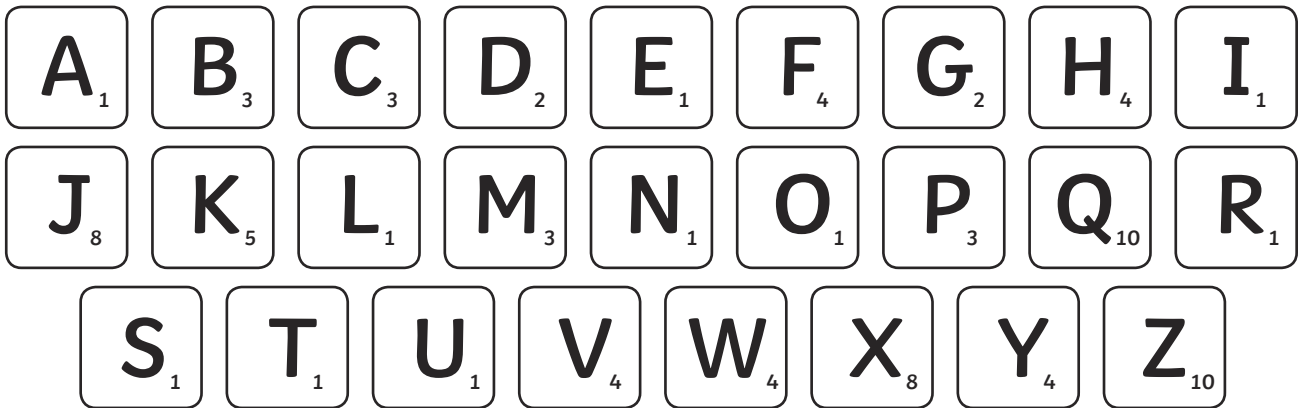


# Letter Tiles Spellings

Use the letter scores to find out which of your 'w-ar' and 'w-or' spelling words would score the most points. The first one has been done for you.



spelling word	values	total
word	4+1+1+2	8
towards		
work		
worst		
war		
worm		
ward		
worth		
world		
warm		

## Challenge Task

How could you add letters to the word 'work' to score some extra points? Use a dictionary to help you. Write your ideas here. Remember, the 'work' part might be at the beginning, in the middle or at the end of the new word.

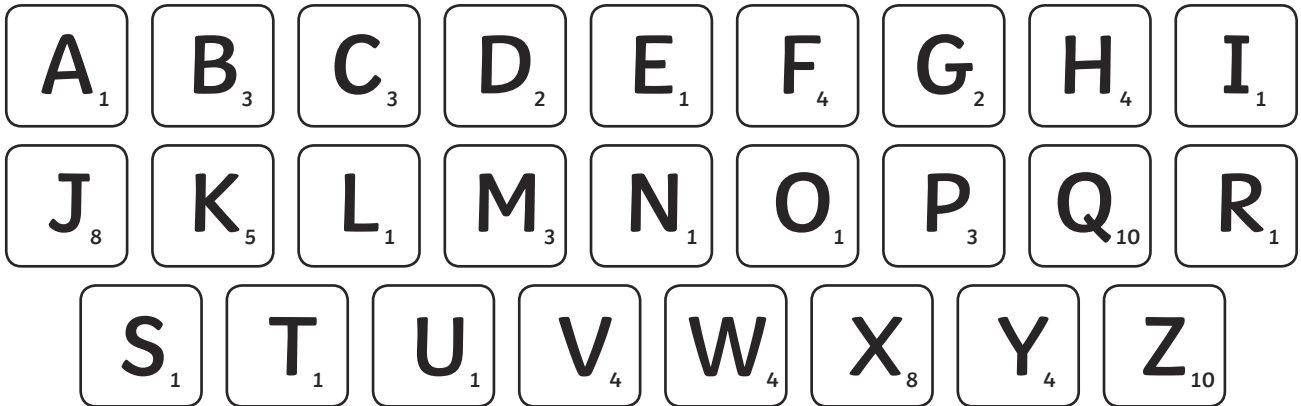
---



---

# Scrabble Spellings Answers

Use the letter scores to find out which of your 'w-ar' and 'w-or' spelling words would score the most points. The first one has been done for you.



spelling word	values	total
word	$4+1+1+2$	8
towards	$1+1+4+1+1+2+1$	11
work	$4+1+1+5$	11
worst	$4+1+1+1+1$	8
war	$4+1+1$	6
worm	$4+1+1+3$	9
ward	$4+1+1+2$	8
worth	$4+1+1+1+4$	11
world	$4+1+1+1+2$	9
warm	$4+1+1+3$	9

## Challenge Task

How could you add letters to the word 'work' to score some extra points? Use a dictionary to help you. Write your ideas here. Remember, the 'work' part might be at the beginning, in the middle or at the end of the new word.

Examples Include: worker, working, worked, workman, hardworking, fireworks, network, housework, artwork, clockwork, roadworks.