

Solar System

Code Breaker



Amazing Fact

The sun is so big that it could fit approximately 1.3 million Earths inside it (if they were squashed up).

Challenge

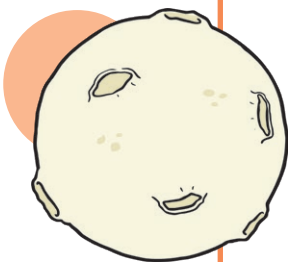
Crack the codes on the following page using the table below to work out the solar system words.

| | | | | | | | | | | | | |
|---|---|---|---|---|---|---|---|---|----|----|----|----|
| a | b | c | d | e | f | g | h | i | j | k | l | m |
| 1 | 2 | 3 | 4 | 5 | 6 | 7 | 8 | 9 | 10 | 11 | 12 | 13 |

| | | | | | | | | | | | | |
|----|----|----|----|----|----|----|----|----|----|----|----|----|
| n | o | p | q | r | s | t | u | v | w | x | y | z |
| 14 | 15 | 16 | 17 | 18 | 19 | 20 | 21 | 22 | 23 | 24 | 25 | 26 |

You could also try to find out:

- what the sun would look like from the other planets in our Solar System;
- what the biggest planet is in our Solar System;
- how far away Earth is from the Sun.



Solar System

Code Breaker

Answers



$$20 - 1 = \underline{\quad 19 \quad}$$

$$13 + 7 = \underline{\quad 20 \quad}$$

$$16 - 15 = \underline{\quad 1 \quad}$$

$$12 + 6 = \underline{\quad 18 \quad}$$

$$9 + 10 = \underline{\quad 19 \quad}$$

Word: Stars

$$12 - 9 = \underline{\quad 3 \quad}$$

$$7 + 8 = \underline{\quad 15 \quad}$$

$$5 + 8 = \underline{\quad 13 \quad}$$

$$12 - 7 = \underline{\quad 5 \quad}$$

$$12 + 8 = \underline{\quad 20 \quad}$$

$$15 + 4 = \underline{\quad 19 \quad}$$

Word: Comets

$$10 + 4 = \underline{\quad 14 \quad}$$

$$15 - 10 = \underline{\quad 5 \quad}$$

$$8 + 8 = \underline{\quad 16 \quad}$$

$$20 + 0 = \underline{\quad 20 \quad}$$

$$25 - 4 = \underline{\quad 21 \quad}$$

$$7 + 7 = \underline{\quad 14 \quad}$$

$$13 - 8 = \underline{\quad 5 \quad}$$

Word: Neptune

$$6 + 7 = \underline{\quad 13 \quad}$$

$$16 - 11 = \underline{\quad 5 \quad}$$

$$10 + 8 = \underline{\quad 18 \quad}$$

$$7 - 4 = \underline{\quad 3 \quad}$$

$$14 + 7 = \underline{\quad 21 \quad}$$

$$26 - 8 = \underline{\quad 18 \quad}$$

$$31 - 6 = \underline{\quad 25 \quad}$$

Word: Mercury